

Discover key diseases and measures for effective control

Potatoes
23.10.2017

Potato crops are susceptible to a variety of diseases that can impact on crop yield and quality.

Syngenta's Potato Crop Establishment Technical Manual provides useful information to help growers make informed decisions about Syngenta crop protection products, and assist in planning and timely intervention.

Early intervention should be a top priority in any case, before diseases have an opportunity to overtake the crop. A proactive approach to disease control provides greater opportunity to sustain high crop yields and maximise the return on investment.

The manual covers the period from harvesting, ground preparation through to the early crop establishment.

Identifying the key diseases in each stage:

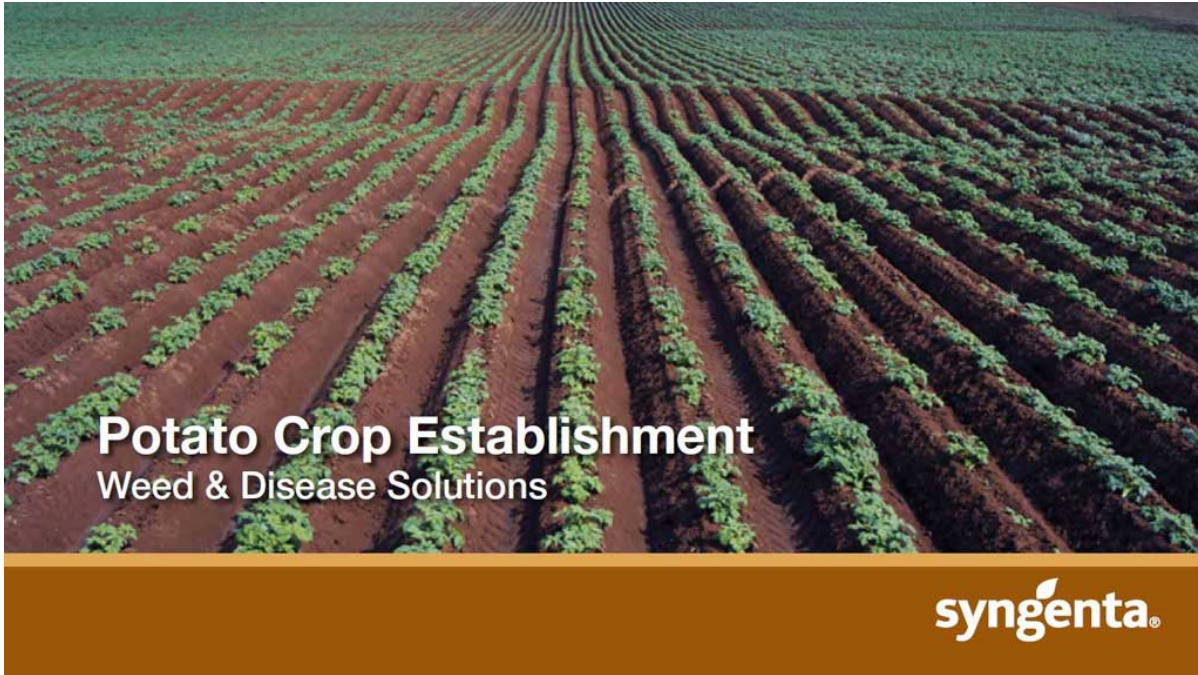
Storage -

- Fusarium Dry Rot and Seed Piece Decay
- Gangrene/Phoma Rot

Planting -

- Pink Rot
- Rhizoctonia/Stem Canker/Black Scurf
- Silver Scurf
- Pythium
- Black Dot
- Common Scab
- Powdery Scab
- Bacterial Wilt
- Black Leg
- Bacterial Soft Rot

Download the Disease ID guide [here](#) or by clicking the image below to learn more about each disease's symptoms, disease cycle, conditions for development, and control solutions for each.



Potato Crop Establishment

Weed & Disease Solutions



Click [here](#) to view the full Potato Portfolio range for disease management.